















## REFERENCES

1. Centers for Disease Control and Prevention, National Center for Health Statistics. National Vital Statistics System, Mortality 1999-2020 on CDC WONDER Online Database, released in 2021. Data are from the Multiple Cause of Death Files, 1999-2020, as compiled from data provided by the 57 vital statistics jurisdictions through the Vital Statistics Cooperative Program. Accessed at <http://wonder.cdc.gov/ucd-icd10.html> on May 19, 2023 4:18:13 PM
2. Surveillance, Epidemiology, and End Results (SEER) Program ([www.seer.cancer.gov](http://www.seer.cancer.gov)) SEER\*Stat Database: Incidence - SEER Research Data, 12 Registries, Nov 2022 Sub (1992-2020) - Linked To County Attributes - Time Dependent (1990-2021) Income/Rurality, 1969-2021 Counties, National Cancer Institute, DCCPS, Surveillance Research Program, released April 2023, based on the November 2022 submission.
3. National Program of Cancer Registries and Surveillance, Epidemiology and End Results Program SEER\*Stat Database: NPCR and SEER Incidence - U.S. Cancer Statistics Public Use Research Database, 2022 Submission (2001-2020). United States Department of Health and Human Services, Centers for Disease Control and Prevention and National Cancer Institute. Released June 2023. Accessed at [www.cdc.gov/cancer/uscs/public-use](http://www.cdc.gov/cancer/uscs/public-use).
4. Surveillance, Epidemiology, and End Results (SEER) Program ([www.seer.cancer.gov](http://www.seer.cancer.gov)) SEER\*Stat Database: Incidence - SEER Research Data, 8 Registries, Nov 2022 Sub (1975-2020) - Linked To County Attributes - Time Dependent (1990-2021) Income/Rurality, 1969-2021 Counties, National Cancer Institute, DCCPS, Surveillance Research Program, released April 2023, based on the November 2022 submission.
5. International Classification of Childhood Cancer (ICCC). ICCC based on ICD-O-3/WHO 2008. Accessed at <https://seer.cancer.gov/iccc/iccc-who2008.html> on May 19, 2023.
6. Surveillance Research Program, National Cancer Institute SEER\*Stat software (<https://seer.cancer.gov/seerstat/>) version 8.4.1.
7. Final 2021 mortality data. Bureau of Vital Records and Health Statistics, Idaho Department of Health and Welfare; September 2022.
8. Surveillance, Epidemiology, and End Results (SEER) Program ([www.seer.cancer.gov](http://www.seer.cancer.gov)) SEER\*Stat Database: Mortality - All COD, Aggregated With State, Total U.S. (1969-2020) <Katrina/Rita Population Adjustment>, National Cancer Institute, DCCPS, Surveillance Research Program, released June 2022. Underlying mortality data provided by NCHS ([www.cdc.gov/nchs](http://www.cdc.gov/nchs)).
9. Johnson CJ, Morawski BM, Rycroft RK. Cancer in Idaho – 2020. Boise, ID: Cancer Data Registry of Idaho; December 2022.
10. Zhang J, Walsh MF, Wu G, Edmonson MN, Gruber TA, Easton J et al. Germline mutations in predisposition genes in pediatric cancer. *N Engl J Med*. 2015 Dec 10;373(24):2336-2346. doi: 10.1056/NEJMoa1508054. Epub 2015 Nov 18.
11. Hudson MM, Ness JJ, Gurney JG, Mulrooney DA, Chemaitilly W, Krull KR et al. Clinical ascertainment of health outcomes among adults treated for childhood cancer. *JAMA*. 2013;309(22):2371-2381. doi:10.1001/jama.2013.6296.
12. Guy GP, Yabroff KR, Ekwueme DU, Wilder Smith A, Dowling EC, Rechis R et al. Estimating the health and economic burden of cancer among those diagnosed as adolescents and young adults. *Health Aff*. 2014;33(6):1024-1031. doi: 10.1377/hlthaff.2013.1425.
13. Dixon SB, Liu Q, Chow EJ, Oeffinger KC, Nathan PC, Howell RM, Leisenring WM, Ehrhardt MJ, Ness KK, Krull KR, Mertens AC, Hudson MM, Robison LL, Yasui Y, Armstrong GT. Specific causes of excess late mortality and association with modifiable risk factors among survivors of childhood cancer: a report from the Childhood Cancer Survivor Study cohort. *Lancet*. 2023 Apr 29;401(10386):1447-1457. doi: 10.1016/S0140-6736(22)02471-0. Epub 2023 Apr 5. PMID: 37030315; PMCID: PMC10149583.





**Table 1. Pediatric (Ages 0-19) Cancer Incidence in Idaho and SEER Regions - Continued**

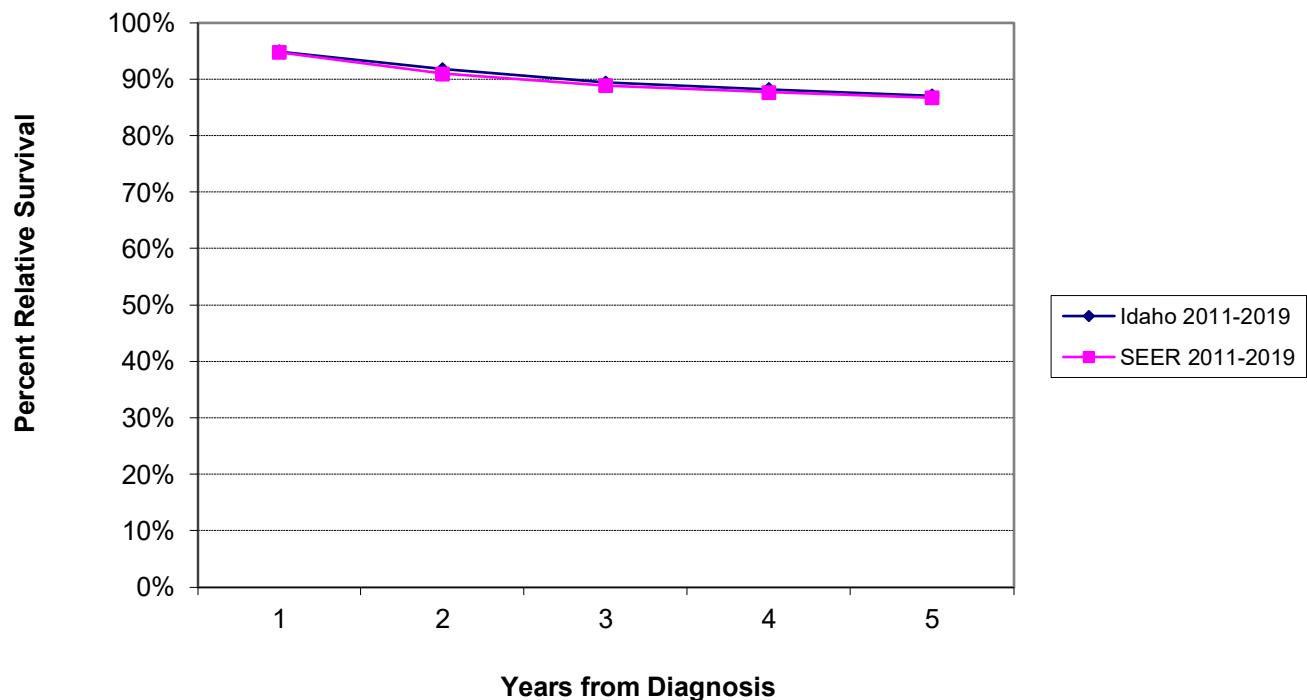
Site/Type of Cancer	Idaho 2011-2020			SEER 2011-2020		
	Rate	Cases	Pop	Rate	Cases	Pop
XI Other malignant epithelial neoplasms and melanomas	23.4	112	4,834,282	22.9	2,313	100,678,488
XI(a) Adrenocortical carcinomas	0.6	3	4,834,282	0.2	18	100,678,488
XI(b) Thyroid carcinomas	10.6	51	4,834,282	10.5	1,066	100,678,488
XI(c) Nasopharyngeal carcinomas	0.0	0	4,834,282	0.4	42	100,678,488
XI(d) Malignant melanomas	5.4	26	4,834,282	3.8	381	100,678,488
XI(e) Skin carcinomas	0.0	0	4,834,282	0.1	11	100,678,488
XI(f) Other and unspecified carcinomas	6.7	32	4,834,282	7.9	795	100,678,488
XII Other and unspecified malignant neoplasms	0.4	2	4,834,282	0.7	73	100,678,488
XII(a) Other specified malignant tumors	0.2	1	4,834,282	0.5	53	100,678,488
XII(b) Other unspecified malignant tumors	0.2	1	4,834,282	0.2	20	100,678,488
Not classified by ICCC or in situ	7.5	36	4,834,282	7.5	760	100,678,488

Rates are per 1,000,000 and age-adjusted to the 2000 U.S. standard.

Cases and rates are for benign, borderline, and malignant behavior.

Statistical Note: Rates based upon 10 or fewer cases (numerator) should be interpreted with caution.

**Figure 1. Pediatric Cancer Relative Survival**



**Table 2. Five-Year Relative Cancer Survival by Major ICC Classification Category**

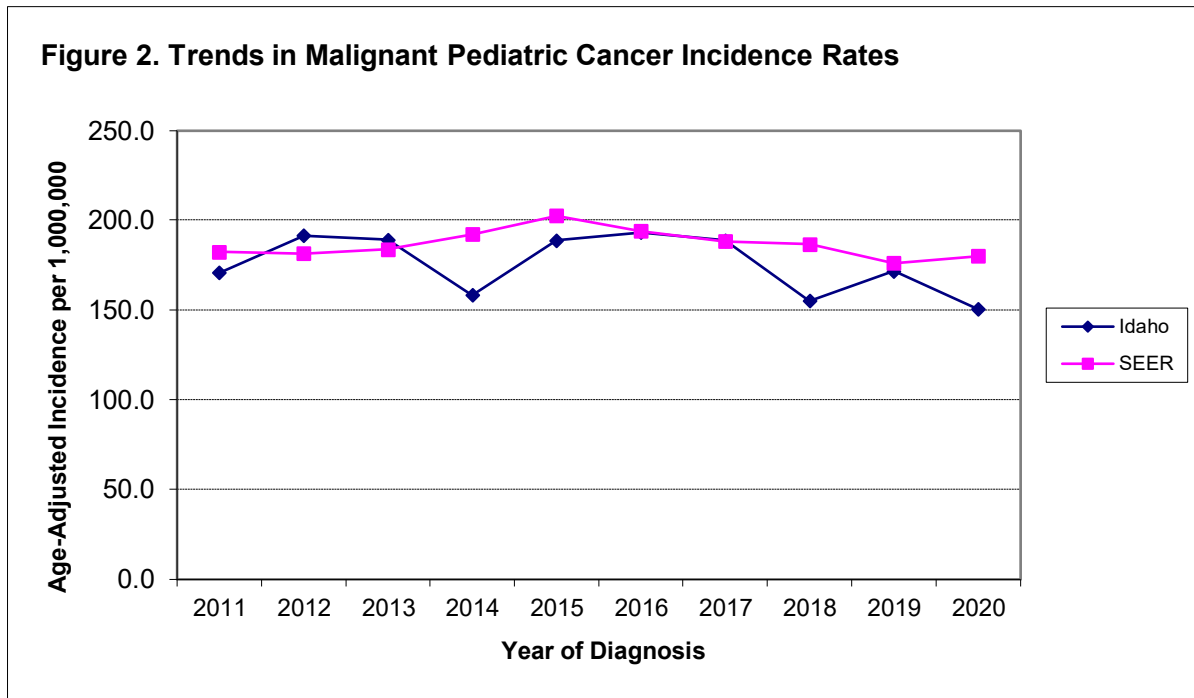
Site/Type of Cancer	Idaho 2011-2019			SEER 2010-2018		
	Cases	% Survival	95% CI	Cases	% Survival	95% CI
<b>All Sites Combined</b>	<b>758</b>	<b>87.1%</b>	<b>84.3% - 89.5%</b>	<b>12650</b>	<b>86.8%</b>	<b>86.1% - 87.4%</b>
I Leukemias, myeloproliferative & myelodysplastic diseases	195	88.4%	82.7% - 92.4%	3419	86.6%	85.3% - 87.8%
II Lymphomas and reticuloendothelial neoplasms	130	94.3%	88.2% - 97.3%	2001	95.0%	93.8% - 95.9%
III CNS and misc intracranial and intraspinal neoplasms	118	81.7%	73.0% - 87.9%	1997	76.0%	73.9% - 77.9%
IV Neuroblastoma and other peripheral nervous cell tumors	36	77.5%	55.9% - 89.5%	521	84.4%	80.6% - 87.5%
V Retinoblastoma	8	100.0%	+	201	94.8%	89.3% - 97.5%
VI Renal tumors	31	84.8%	63.4% - 94.2%	412	93.0%	89.7% - 95.2%
VII Hepatic tumors	9	100.0%	+	190	80.0%	73.1% - 85.3%
VIII Malignant bone tumors	32	59.6%	39.8% - 74.8%	634	70.7%	66.6% - 74.5%
IX Soft tissue and other extraosseous sarcomas	52	71.4%	55.2% - 82.6%	761	75.6%	72.1% - 78.8%
X Germ cell & trophoblastic tumors & neoplasms of gonads	53	92.4%	80.7% - 97.1%	860	93.6%	91.6% - 95.2%
XI Other malignant epithelial neoplasms and melanomas	95	96.6%	89.3% - 98.9%	1658	96.2%	95.0% - 97.1%
XII Other and unspecified malignant neoplasms	1	+	+	46	93.3%	80.5% - 97.8%

+ The statistic could not be calculated.

**Table 3. Malignant Pediatric (Ages 0-19) Cancer Incidence in Idaho and SEER Regions**

Year of Diagnosis	Idaho 2011-2020			SEER 2011-2020		
	Rate	Cases	Pop	Rate	Cases	Pop
Total	175.6	846	4,834,282	186.7	18,851	100,678,488
2011	170.6	81	473,968	182.3	1,874	10,204,875
2012	191.2	90	472,426	181.3	1,855	10,174,086
2013	189.1	89	473,095	183.7	1,872	10,155,628
2014	158.1	75	475,754	192.0	1,951	10,131,157
2015	188.7	90	478,516	202.3	2,054	10,118,358
2016	193.2	93	483,710	193.8	1,963	10,101,673
2017	188.6	92	489,540	188.0	1,898	10,066,610
2018	154.9	76	492,415	186.4	1,868	10,000,143
2019	171.5	85	496,044	176.1	1,750	9,916,979
2020	150.5	75	498,814	179.9	1,766	9,808,979

Rates are per 1,000,000 and age-adjusted to the 2000 U.S. standard.



**Table 4. Pediatric (Ages 0-19) Cancer Incidence in Idaho by Health District, Major Classification Categories, 2011-2020**

Site/Type of Cancer	Health District 1			Health District 2			Health District 3		
	Rate	95% CI	Cases	Rate	95% CI	Cases	Rate	95% CI	Cases
All Sites Combined	182.4	148.8 - 221.2	103	152.1	108.3 - 207.8	40	189.6	161.5 - 221.2	162
I Leukemias, myeloproliferative & myelodysplastic diseases	51.5	34.5 - 73.9	29	28.5	11.4 - 58.8	7	52.0	37.9 - 69.6	45
II Lymphomas and reticuloendothelial neoplasms	22.7	12.1 - 39.0	13	25.3	9.3 - 54.8	6	35.2	23.8 - 50.3	30
III CNS and misc intracranial and intraspinal neoplasms	31.6	18.7 - 50.0	18	37.8	18.0 - 70.1	10	41.8	29.3 - 57.9	36
IV Neuroblastoma and other peripheral nervous cell tumors	7.3	2.0 - 18.5	4	12.6	2.6 - 36.4	3	6.0	1.9 - 14.0	5
V Retinoblastoma	0.0	0.0 - 6.6	0	0.0	0.0 - 14.8	0	2.5	0.3 - 8.9	2
VI Renal tumors	7.2	2.0 - 18.4	4	3.2	0.1 - 20.2	1	2.3	0.3 - 8.4	2
VII Hepatic tumors	5.6	1.1 - 16.1	3	0.0	0.0 - 14.8	0	0.0	0.0 - 4.4	0
VIII Malignant bone tumors	5.3	1.1 - 15.6	3	4.3	0.1 - 23.1	1	10.5	4.8 - 19.9	9
IX Soft tissue and other extrasosseous sarcomas	10.5	3.9 - 23.0	6	11.6	2.3 - 34.3	3	5.9	1.9 - 13.8	5
X Germ cell & trophoblastic tumors & neoplasms of gonads	12.4	5.0 - 25.5	7	9.6	2.0 - 29.9	3	15.6	8.3 - 26.6	13
XI Other malignant epithelial neoplasms and melanomas	28.3	16.2 - 46.0	16	19.2	7.0 - 43.4	6	17.8	9.9 - 29.3	15
XII Other and unspecified malignant neoplasms	0.0	0.0 - 6.6	0	0.0	0.0 - 14.8	0	0.0	0.0 - 4.4	0

Site/Type of Cancer	Health District 4			Health District 5			Health District 6			Health District 7		
	Rate	95% CI	Cases	Rate	95% CI	Cases	Rate	95% CI	Cases	Rate	95% CI	Cases
All Sites Combined	208.4	184.3 - 234.8	270	181.1	148.4 - 218.9	107	201.0	164.8 - 242.7	108	177.2	147.6 - 211.0	126
I Leukemias...	49.7	38.3 - 63.5	64	41.2	26.6 - 60.9	25	33.0	19.6 - 52.2	18	31.9	20.2 - 47.9	23
II Lymphomas...	41.3	31.0 - 54.0	54	17.1	8.2 - 31.4	10	29.7	17.0 - 48.3	16	17.1	8.8 - 29.8	12
III CNS and...	41.3	31.0 - 53.9	54	52.2	35.4 - 74.1	31	41.1	25.8 - 62.3	22	45.1	30.9 - 63.7	32
IV Neuroblastoma...	10.5	5.6 - 18.0	13	6.5	1.8 - 16.7	4	14.9	6.4 - 29.3	8	2.8	0.3 - 10.0	2
V Retinoblastoma	1.6	0.2 - 5.8	2	1.8	0.0 - 9.6	1	5.6	1.2 - 16.3	3	0.0	0.0 - 5.1	0
VI Renal tumors	10.2	5.4 - 17.5	13	11.3	4.5 - 23.5	7	9.2	3.0 - 21.6	5	8.1	3.0 - 17.8	6
VII Hepatic tumors	3.1	0.8 - 8.0	4	0.0	0.0 - 6.2	0	3.6	0.4 - 13.2	2	1.5	0.0 - 7.9	1
VIII Malignant bone tumors	6.1	2.6 - 12.0	8	8.4	2.7 - 19.6	5	5.7	1.2 - 16.5	3	8.5	3.1 - 18.4	6
IX Soft tissue...	13.1	7.7 - 21.1	17	5.0	1.0 - 14.7	3	22.4	11.6 - 39.1	12	12.2	5.6 - 23.3	9
X Germ cell...	11.5	6.4 - 19.0	15	12.4	5.0 - 25.4	7	15.2	6.6 - 29.9	8	12.5	5.7 - 23.8	9
XI Other malig epithelial...	19.8	13.0 - 29.1	26	25.3	13.8 - 42.3	14	18.6	8.9 - 34.2	10	36.0	23.3 - 53.0	25
XII Other/unspecified...	0.0	0.0 - 2.9	0	0.0	0.0 - 6.2	0	1.9	0.0 - 10.6	1	1.5	0.0 - 7.9	1

Rates are per 1,000,000 and age-adjusted to the 2000 U.S. standard.

Confidence intervals (CIs) are 95% for rates.

Statistical Note: Rates based upon 10 or fewer cases (numerator) should be interpreted with caution.

**Table 5. Pediatric (Ages 0-19) Cancer Mortality in Idaho and the U.S.**

Year of Death	Idaho 2011-2021			U.S. 2011-2020		
	Rate	Deaths	Pop	Rate	Deaths	Pop
Total	21.5	115	5,353,091	24.8	20,411	821,036,910
2011	14.7	7	473,968	25.7	2,135	82,838,469
2012	16.8	8	472,426	26.9	2,221	82,501,478
2013	12.7	6	473,095	25.7	2,116	82,271,238
2014	18.9	9	475,754	24.8	2,038	82,139,198
2015	14.6	7	478,516	24.9	2,047	82,120,410
2016	26.8	13	483,710	25.7	2,118	82,161,437
2017	18.4	9	489,540	24.0	1,977	82,114,364
2018	30.3	15	492,415	24.5	2,010	81,956,393
2019	40.1	20	496,044	23.1	1,889	81,679,568
2020	14.1	7	498,814	22.9	1,860	81,254,355
2021	27.2	14	518,809			

Rates are per 1,000,000 and age-adjusted to the 2000 U.S. standard.

**Figure 3. Trends in Pediatric Cancer Mortality Rates**

